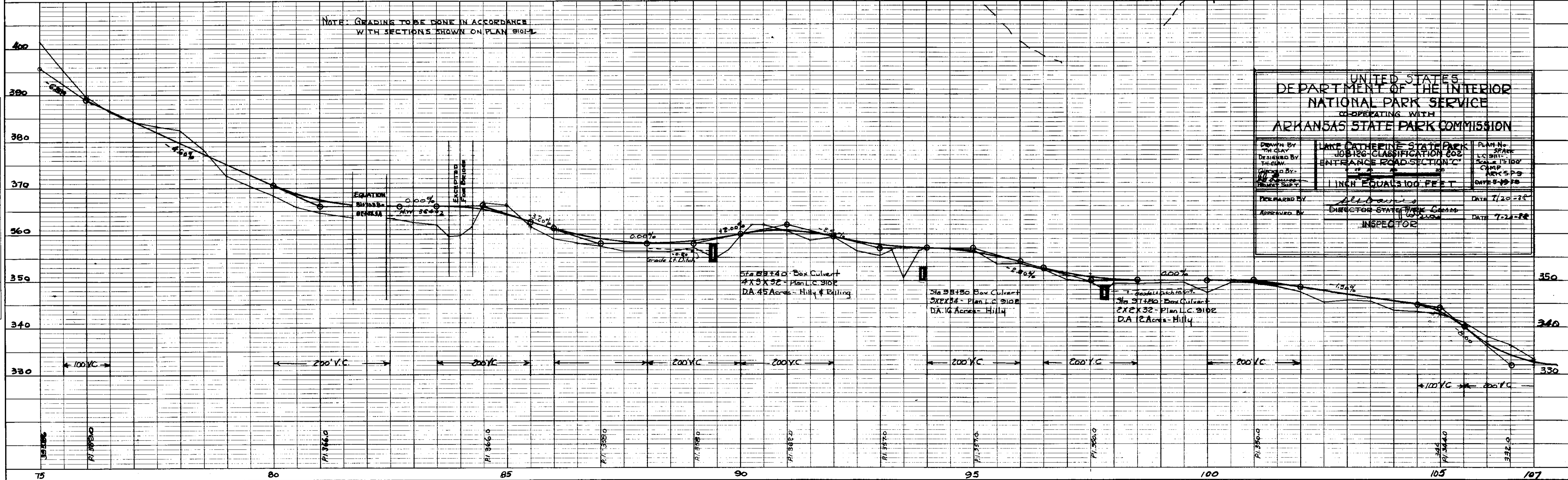
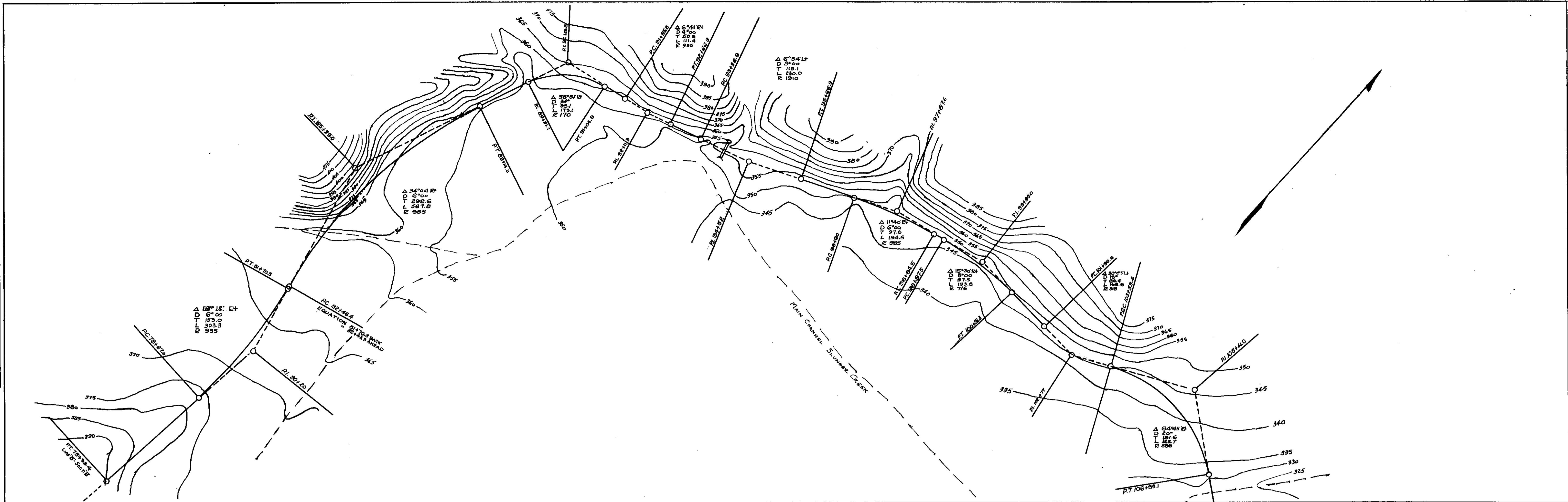


PLAN	SURVEYED	DATE
	PLOTTED	BY
	CHECKED	
	BY	
	NO.	

PROFILE	SURVEYED	DATE
	PLOTTED	BY
	CHECKED	
	BY	
	NO.	

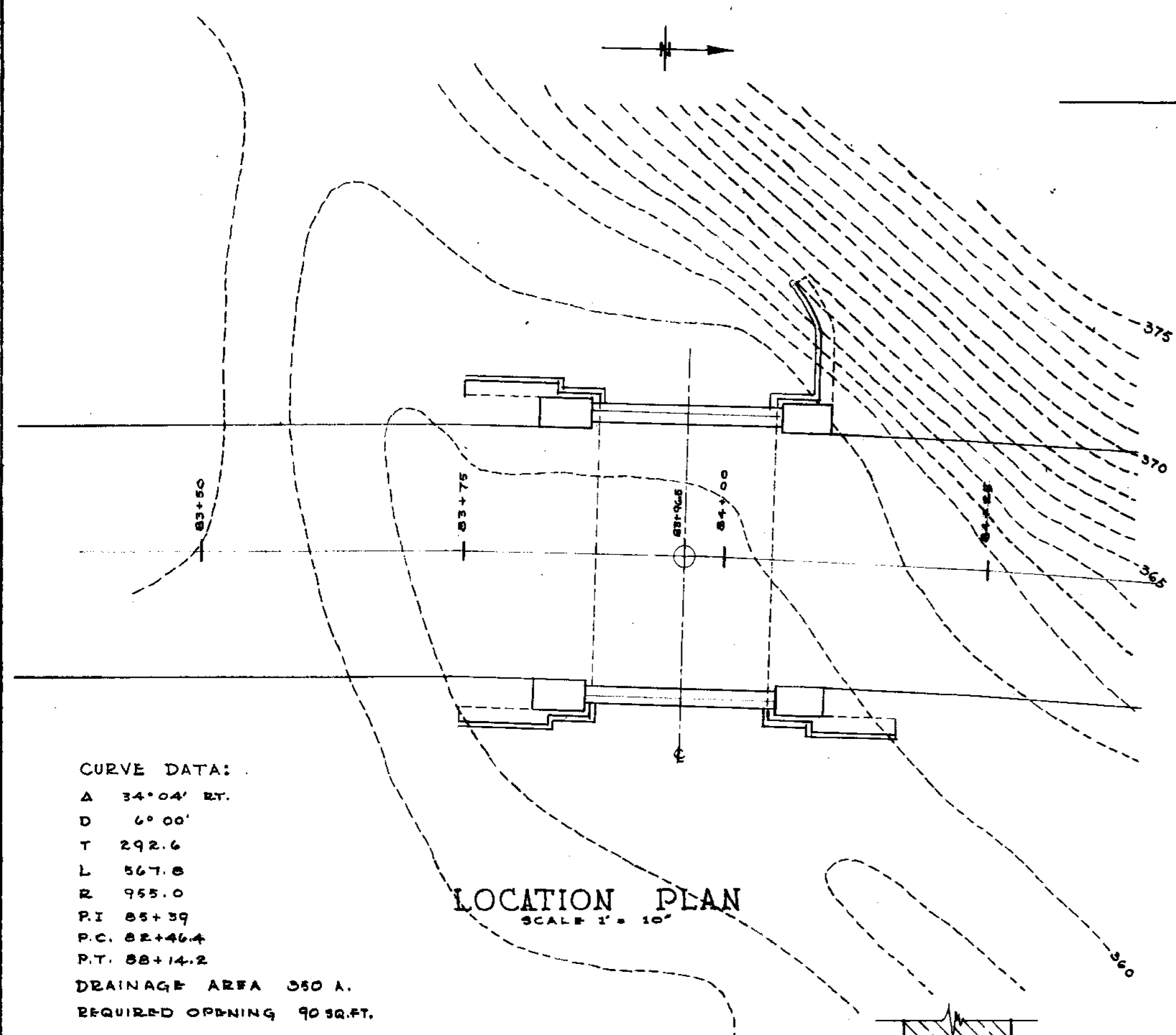


UNITED STATES DEPARTMENT OF THE INTERIOR
NATIONAL PARK SERVICE
CO-OPERATING WITH
ARKANSAS STATE PARK COMMISSION

Drawn By T.H. CLAY	DATE 7/25-30
Designed By T.H. CLAY	DATE 7/25-30
Checked By T.H. CLAY	DATE 7/25-30
Approved By DIRECTOR STATE PARK COMM.	DATE 7/25-30
INSPECTOR	

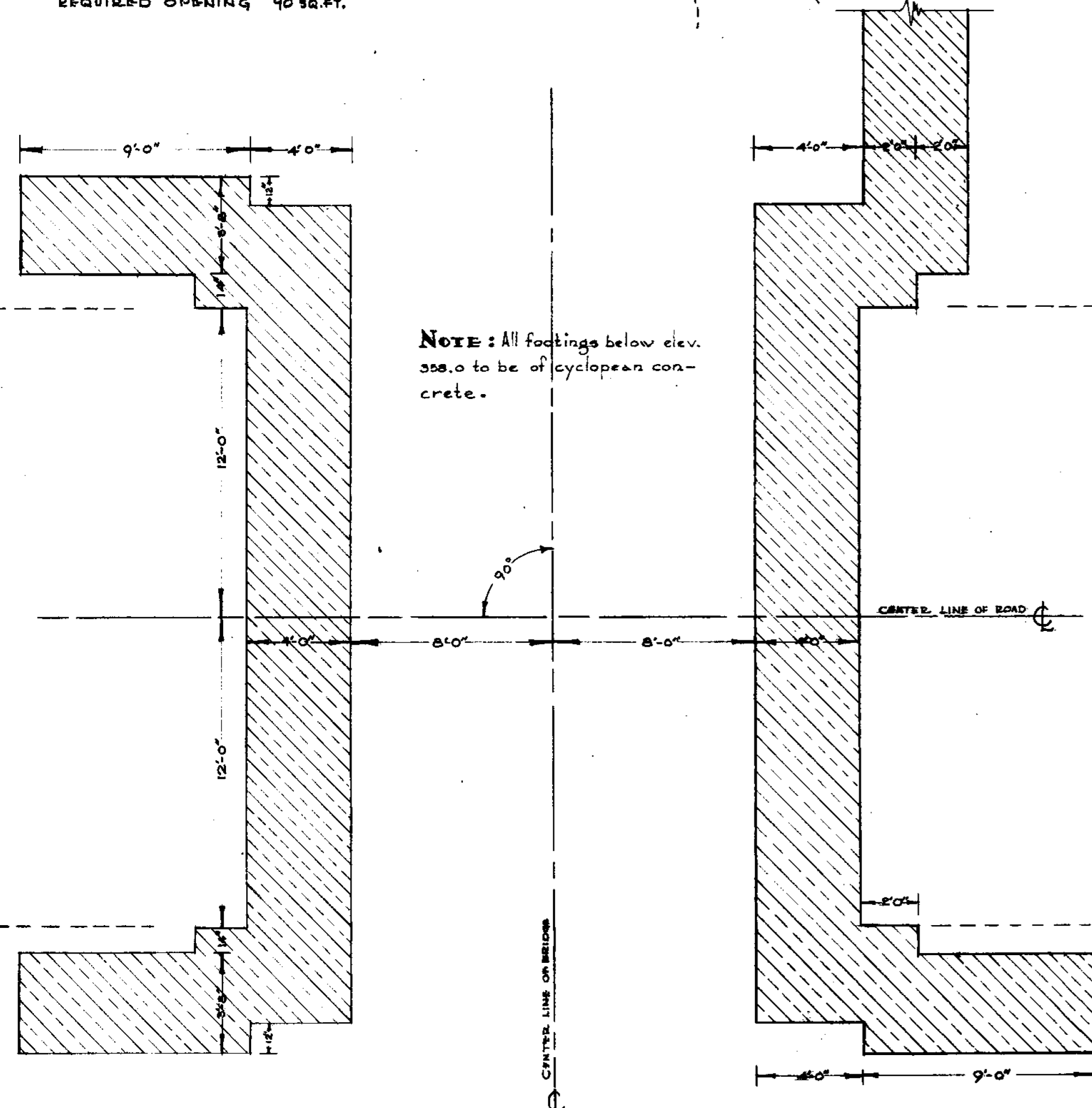
PLAN No. 9102
JOB No. CLASSIFICATION 602
ENTRANCE ROAD SECTION C
SCALE 1" = 100'
CAMP
ARK 579
DATE 5-19-38

1 INCH EQUALS 100 FEET



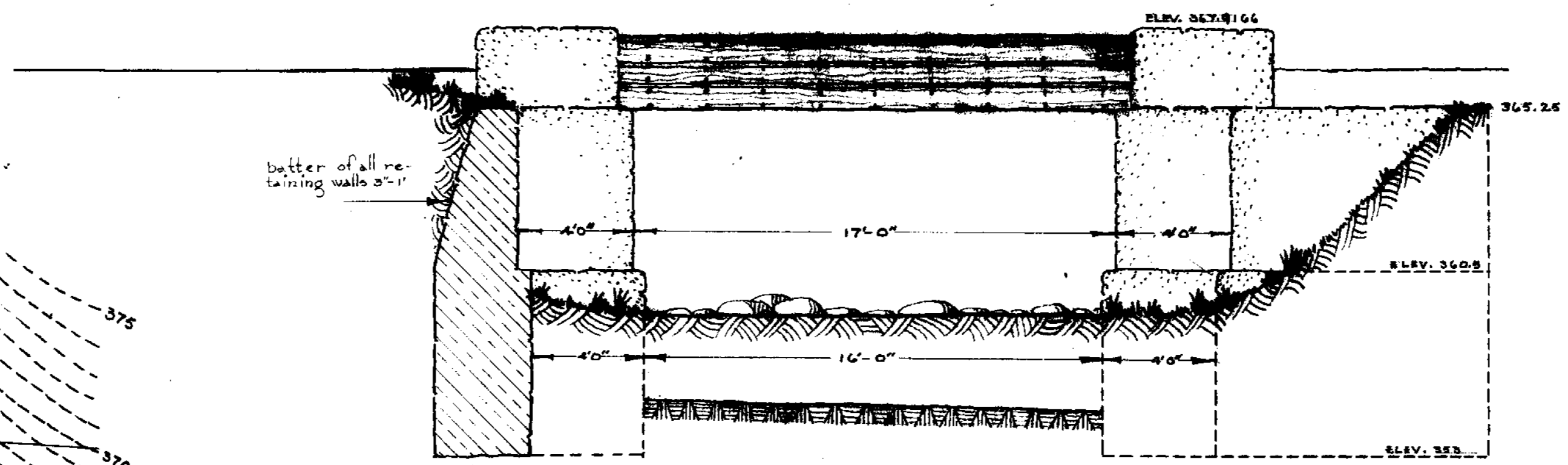
CURVE DATA:
 A 24°04' RT.
 D 6°00'
 T 292.6
 L 567.8
 R 965.0
 P.I. 85+39
 P.C. 82+46.4
 P.T. 88+14.2
 DRAINAGE AREA 350 A.
 REQUIRED OPENING 90 SQ. FT.

LOCATION PLAN
 SCALE 1" = 10'

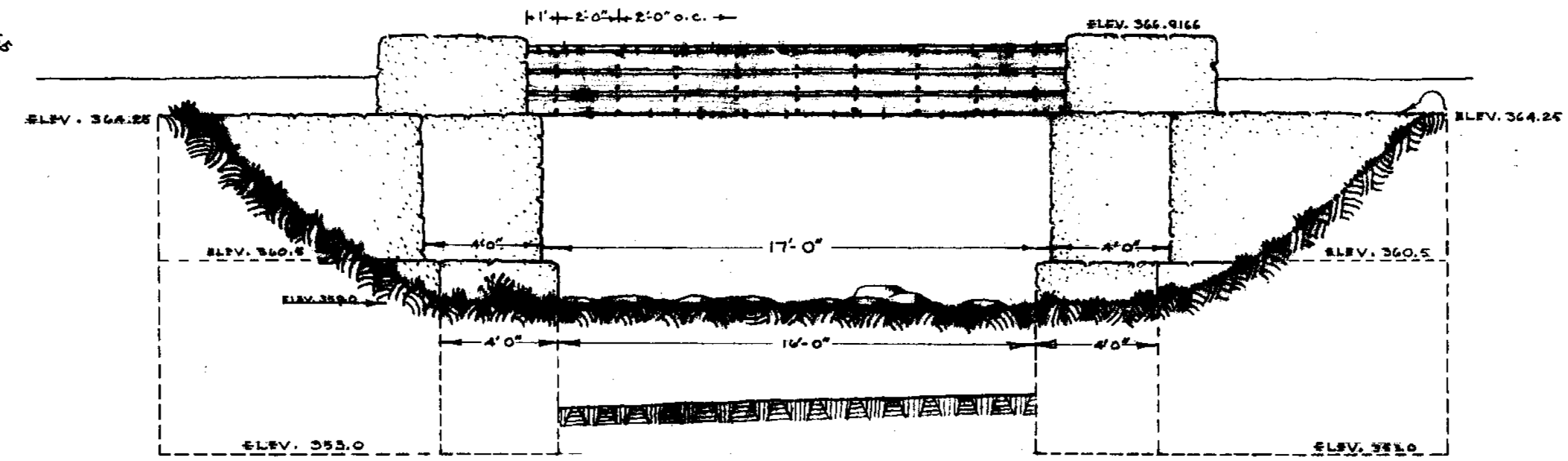


NOTE: All footings below elev. 358.0 to be of cyclopean concrete.

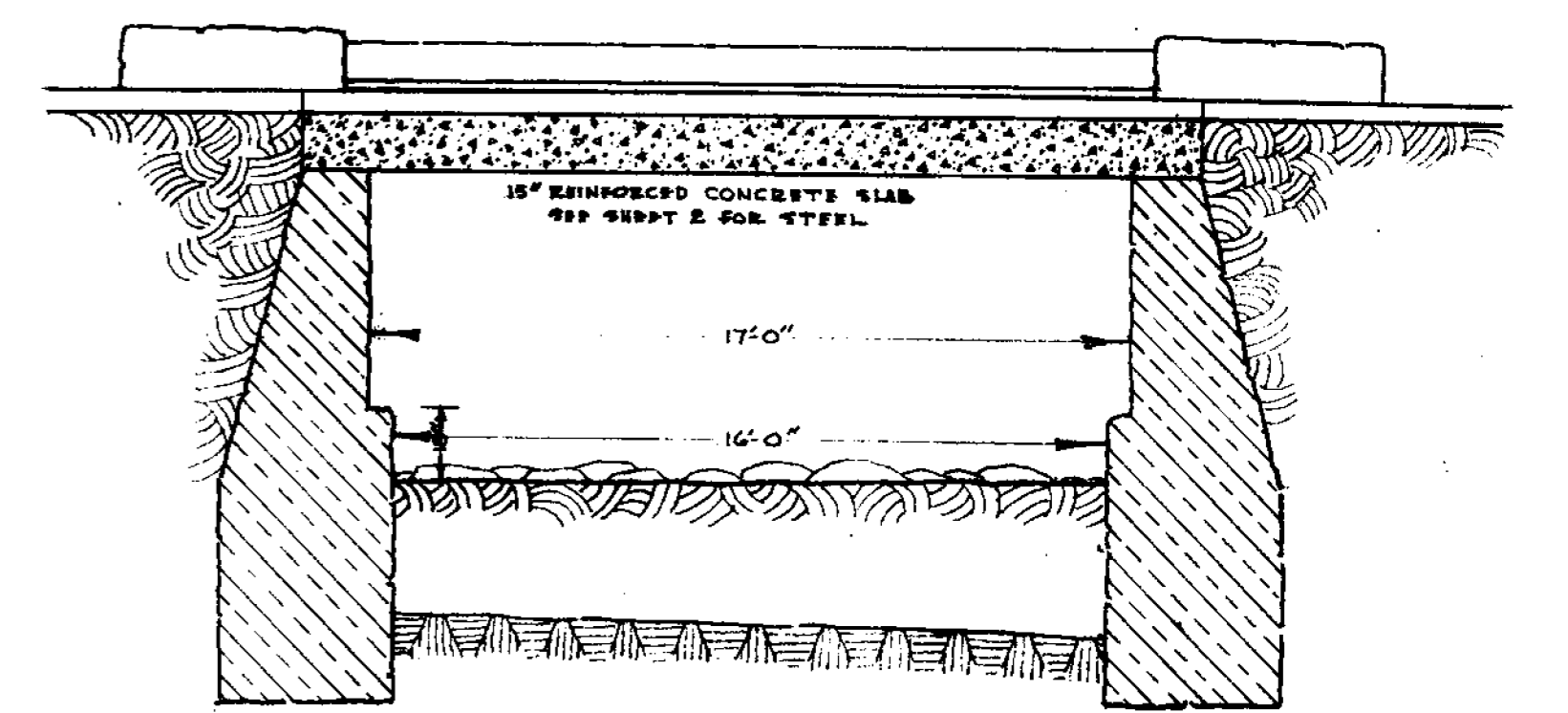
FOOTING PLAN



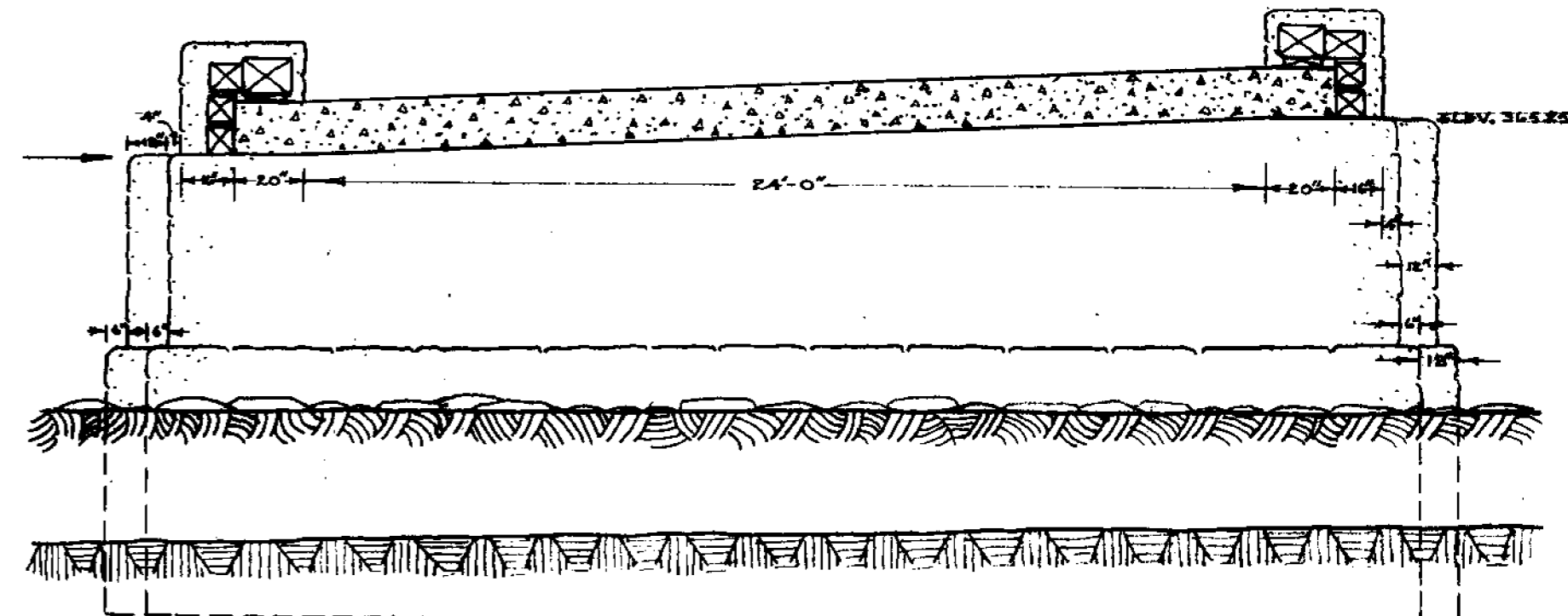
UPSTREAM ELEVATION



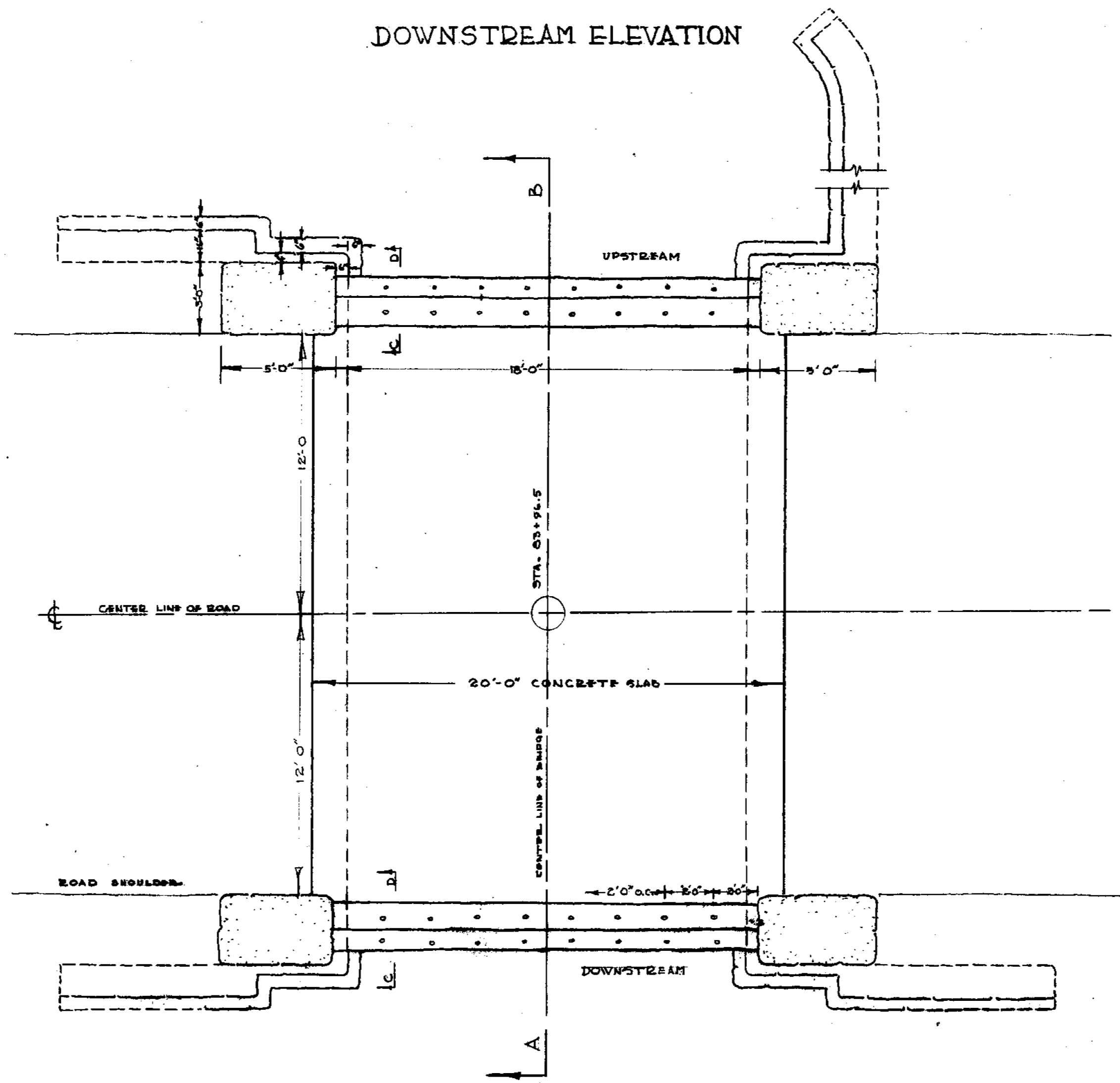
DOWNSTREAM ELEVATION



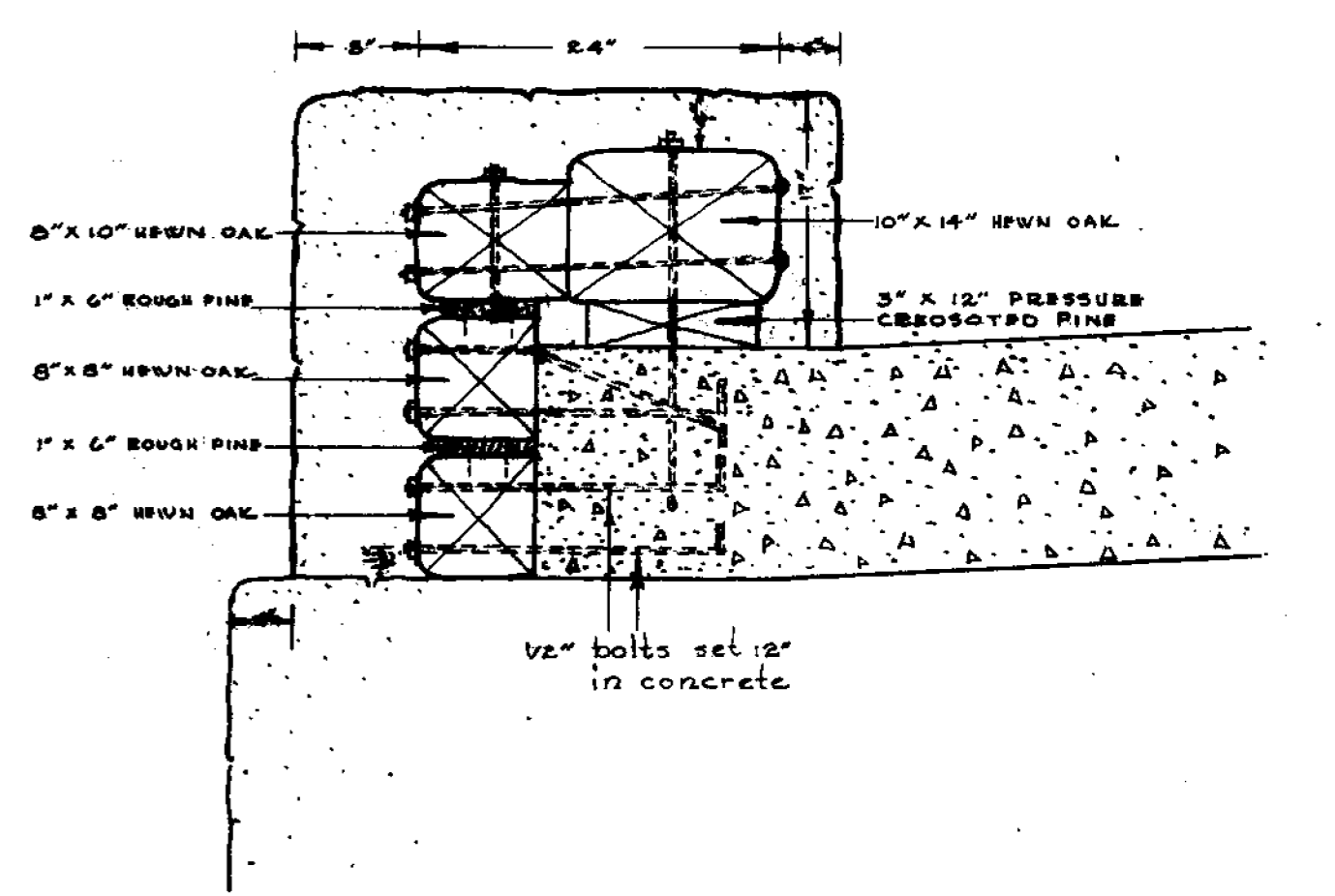
SECTION ON ROAD CENTER LINE



SECTION A-B



PLAN



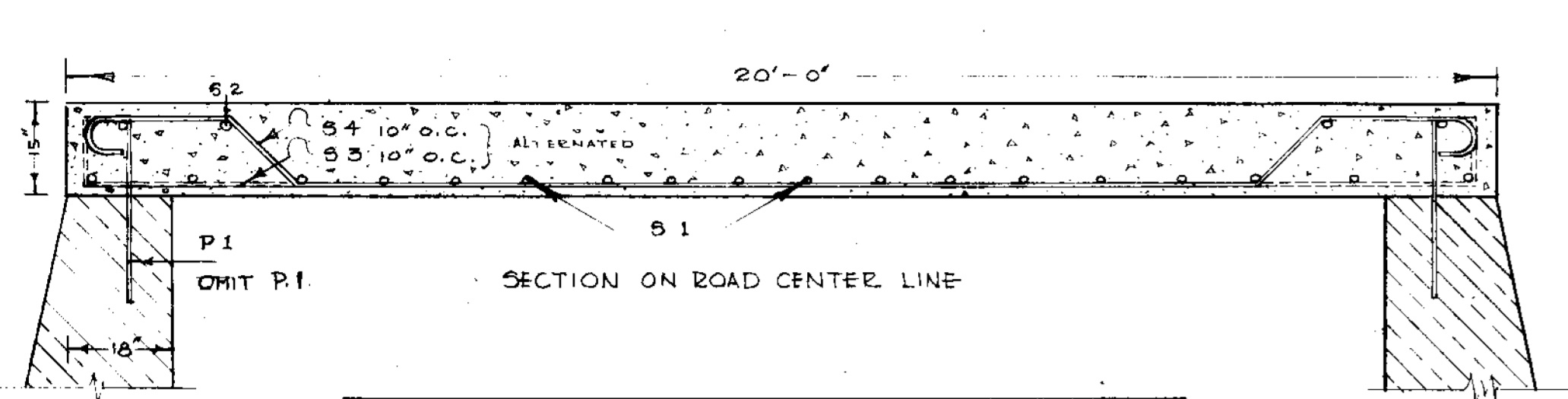
SECTION C-D

ARKANSAS STATE PARK COMMISSION
 IN COOPERATION WITH
 UNITED STATES
 DEPARTMENT OF THE INTERIOR
 NATIONAL PARK SERVICE

LAKE CATHERINE STATE PARK
 VEHICLE BRIDGE
 JOB NO. 137 CLASS 104

DATE 5/24/39

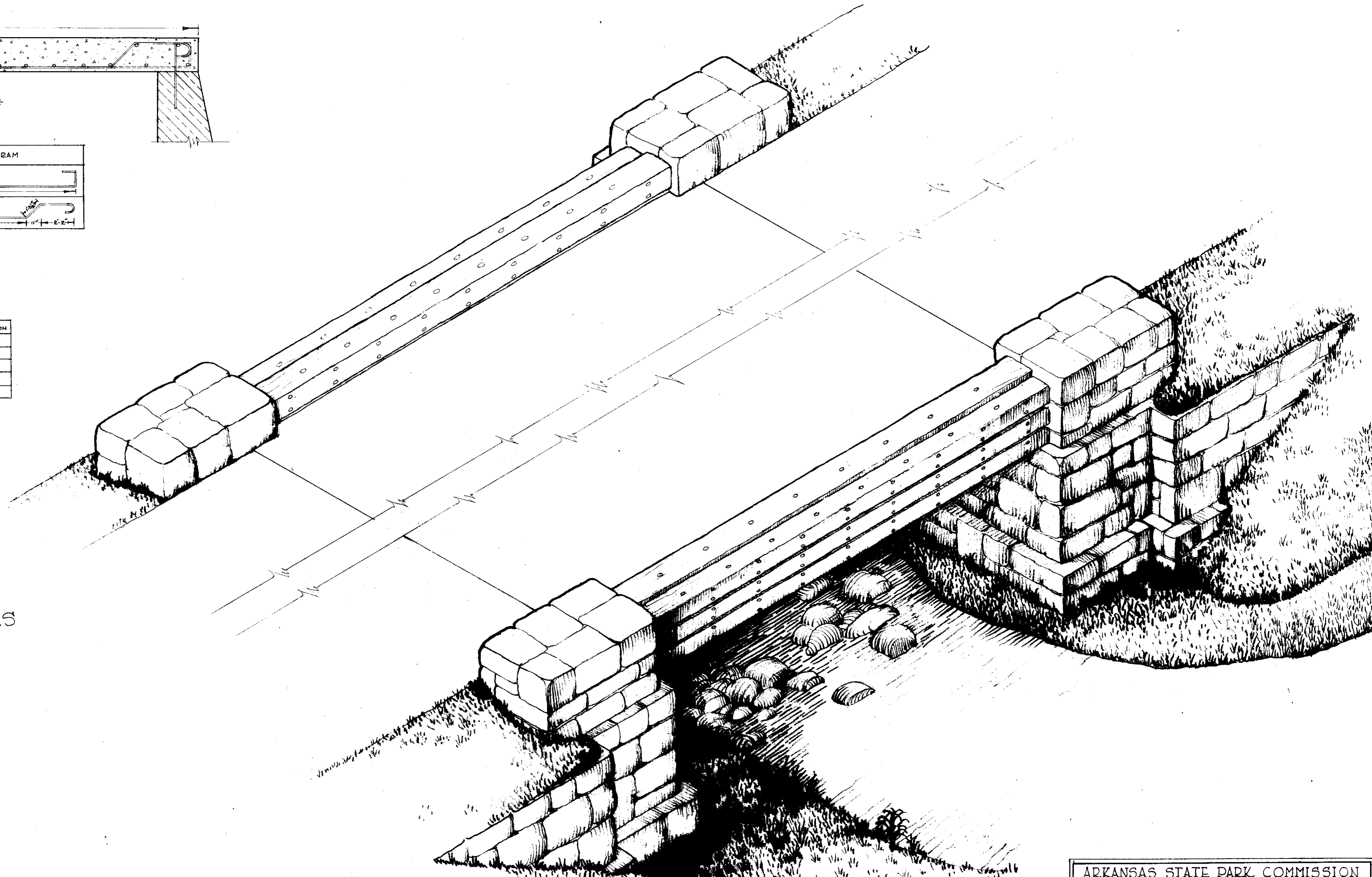
LC0051-D



MARK	SIZE	LENGTH	BENDING DIAGRAM
S 3	7/8" φ	22'-10"	
S 4	7/8" φ	22'-5"	

OMIT P1.

MARK NUMBER	SIZE	LENGTH	DESCRIPTION
P 1	5/8" φ	2'-0"	STRAIGHT
S 1	1/2" φ	27'-0"	STRAIGHT
S 2	1/2" φ	27'-0"	STRAIGHT
S 3	7/8" φ	22'-10"	BENT
S 4	7/8" φ	22'-5"	BENT



STEEL DETAILS

ISOMETRIC VIEW
SHOWING FINISH GRADING

LC0052-D

ARKANSAS STATE PARK COMMISSION
IN COOPERATION WITH
UNITED STATES
DEPARTMENT OF THE INTERIOR
NATIONAL PARK SERVICE

DRAWN BY REX CONNER	LAKE CATHERINE STATE PARK	PLAN NO. SPARC-LC-919-26
DESIGNED BY REX CONNER	VEHICLE BRIDGE	SCALE 1/2" = 1'
CHECKED BY R. J. CONNER	JOB NO. 157 CLASS 104	ARK-SP-9
APPROVED BY <i>[Signature]</i>		DATE 5-19-59
APPROVED BY <i>[Signature]</i>		DATE 5/24/59